

**U.S. DEPARTMENT OF COMMERCE**  
 National Oceanic and Atmospheric Administration  
 National Weather Service  
**MARINE WEATHER SERVICES CHART**  
**GUAM AND THE NORTHERN MARIANA ISLANDS**  
 NOT TO BE USED FOR NAVIGATION

**EXPLANATION OF ADVISORIES/WARNINGS**

**SMALL CRAFT ADVISORY:** Issued to alert mariners to sustained (more than two hours) weather or sea conditions, either present or forecast, that might be hazardous to small boats. Boaters/Mariners will be able to receive the Small Craft Advisory by keeping tuned to a NOAA Weather Radio Station or the Coast Guard and commercial radio stations that transmit marine weather information. The threshold conditions for the Small Craft Advisory are usually based on 25 knots of wind or hazardous wave conditions. Decision as to the degree of hazard will be left to the boat operator, based on experience and the size and type of boat. There is no legal definition of the term "small craft". Threshold conditions for Small Craft Advisories for Guam and the Northern Mariana Islands are sustained winds of 18 knots or greater and/or gusts of 26 knots or greater.

**HIGH SURF ADVISORY:** To indicate surf conditions are expected to be 9 feet (3 meters) or greater (or less if conditions are determined to be hazardous).

**GALE WARNING:** Issued to indicate winds within the range of 34 to 47 knots are either present or forecast for the area.

**STORM WARNING:** Issued to indicate winds of 48 knots or above, no matter how high the speed, are either present or forecast for the area.

**TYPHOON WARNING:** To indicate winds 64 knots or greater are expected for the area. Issued only in connection with a tropical cyclone (typhoon).

**NOTE:** A "Watch" is an announcement issued whenever a tropical cyclone (tropical storm or typhoon) might be a potential threat to a coastal area. The "Watch" announcement is not a warning rather it indicates that the tropical storm or typhoon is near enough that everyone in the area covered by the "Watch" should listen to their radios for subsequent advisories and be ready to take precautionary action in case a warning is issued.

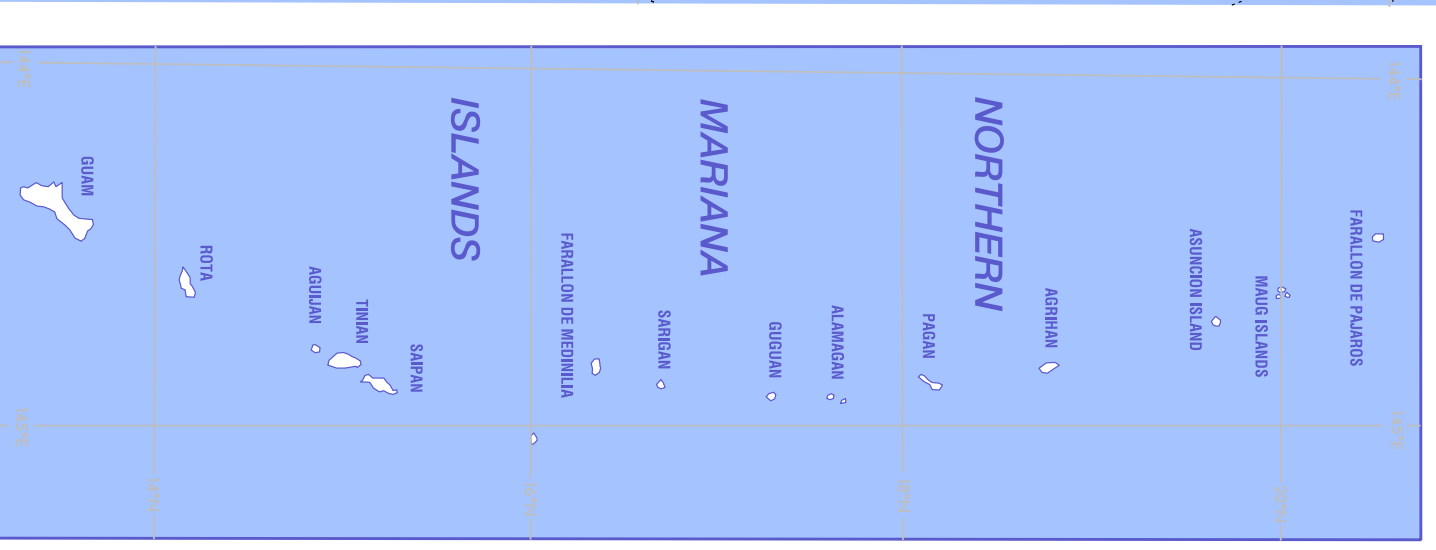
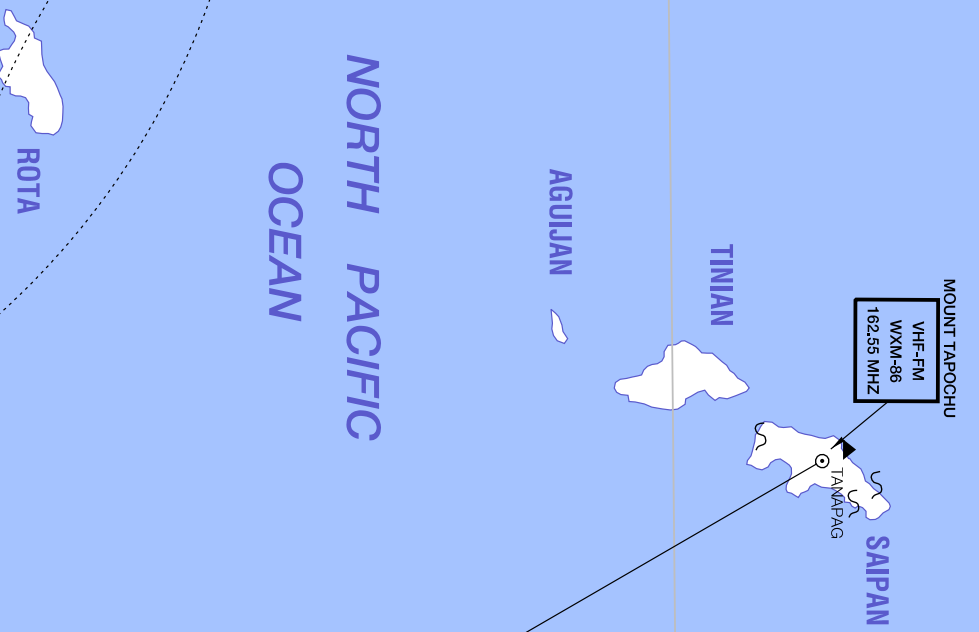
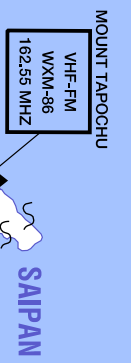
**TROPICAL CYCLONE CONDITIONS OF READINESS:** Issued whenever destructive winds of over 50 knots are expected for a particular island from the influence of either a tropical storm or a typhoon. The conditions of readiness are:

**CONDITION ONE** -Destructive winds (50 knots or greater) are occurring/anticipated within 12 hours.

**CONDITION TWO** -Destructive winds are possible within 24 hours.

**CONDITION THREE** -Destructive winds are possible within 48 hours.

**CONDITION FOUR** -Destructive winds are possible within 72 hours (Guam and the Northern Mariana Islands are always on condition four throughout the year to be prepared for any fast-developing system in this typhoon-prone area).



**LEGEND**

- ⊙ NOAA WEATHER RADIO TRANSMITTER SITE
- DAYTIME WARNING DISPLAY SITE
- ▲ DAY AND NIGHT WARNING DISPLAY SITE
- ⋈ SURF OBSERVING SITE

**NOAA WEATHER RADIO**

NOAA Weather Radio broadcasts on 162.40 and 162.55 MHz can usually be received up to 100 miles from the transmitting antenna site, depending on terrain and the quality of the receiver. The VHF-FM frequencies used for these broadcasts require narrow band FM receivers. The National Weather Service recommends receivers having a sensitivity of one microvolt or less and a quieting factor of 20 decibels.

Some receivers are equipped with a warning clam device that can be turned on by means of a tone signal controlled by the National Weather Service office concerned. This signal is transmitted for 13 seconds preceding an announcement of a severe weather warning.